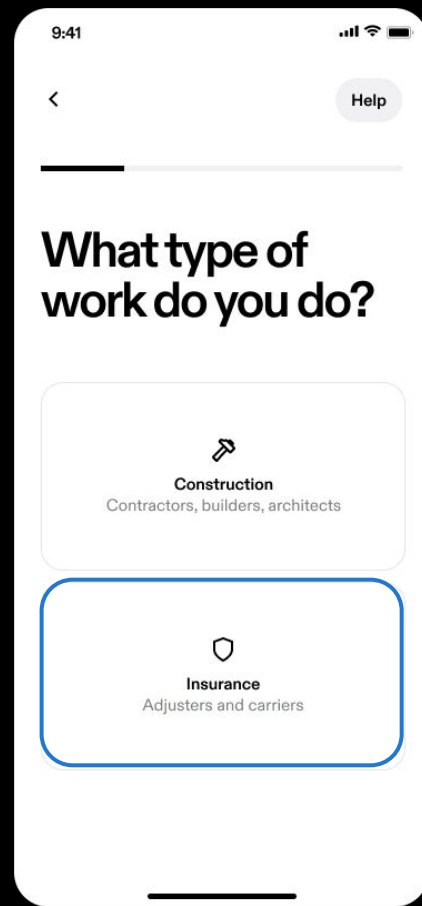
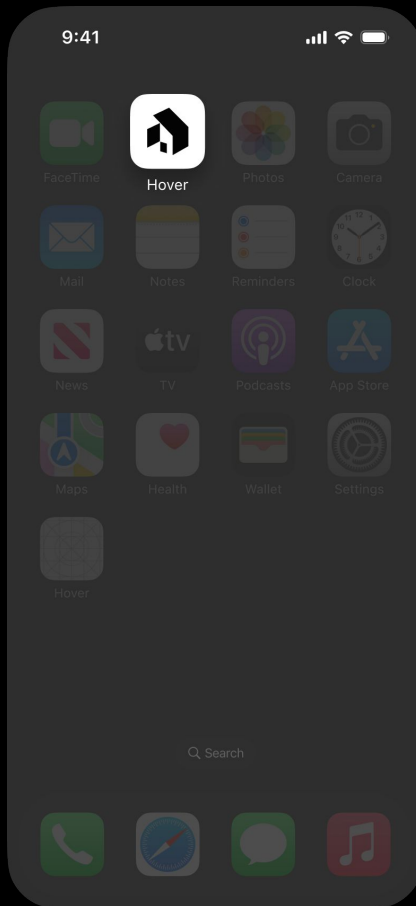


A man with short dark hair, wearing a maroon long-sleeved shirt and a light blue face mask, is seen from behind. He is holding a tablet computer with both hands, capturing a photo of a large, two-story house with a tiled roof and arched windows. The house is surrounded by green trees and shrubs under a clear blue sky. The scene is brightly lit, suggesting it's daytime.

Exterior Capture

Insurance Pros

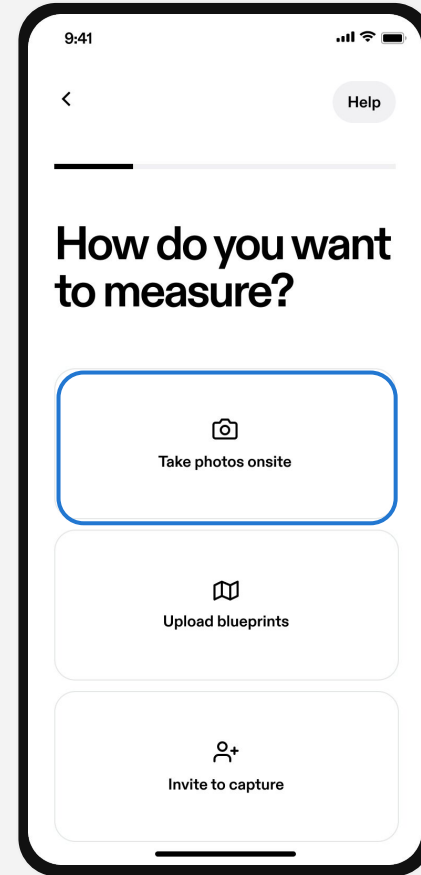
Download the Hover app



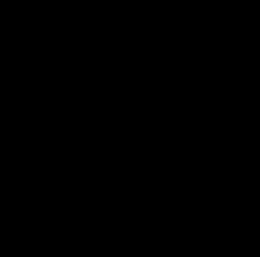
Take photos onsite

Never hand measure again and get material-level detail aerial can't detect.

Simply take smartphone photos of any property and Hover does the rest.



With as few as
eight photos



Comprehensive data package

- ✓ Measurement report
- ✓ Floor plans
- ✓ Damage photos
- ✓ Import into estimating software

Measurement and Quantities

HOVER Full Measurement Report

Areas	Siding	Other
Facades	765 ft ²	1266 ft ²
Openings	232 ft ²	382 ft ²
Trims*	8 ft ²	20 ft ²
Unknown (no photos)*	-	-
Total	1005 ft²	1668 ft²

*Any trim or unknown material that touches siding is included in the 'Siding' column. If it does not touch siding, then it's included in the 'Other' column.

Openings	Siding	Other
Quantity	10	27
Tops Length	65' 7"	90' 8"
Sills Length	15' 8"	78' 7"
Sides Length	68' 9"	137' 9"
Total Perimeter	150'	307'

Corners	Siding	Other
Inside Qty	1	0
Inside Length	1'	-

Trim	Siding	Other
Level Starter	81' 3"	189' 9"
Sloped Trim	72' 7"	49' 10"
Vertical Trim	46' 6"	434'

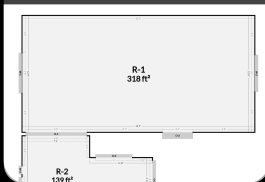
Roofline	Length	Avg. Depth	Soffit Area
Eaves Fascia	127'	-	-
Level Frieze Board	76' 8"	2' 5"	217 ft ²
Rakes Fascia	182' 7"	-	-
Sloped Frieze Board	174' 5"	2' 2"	380 ft ²

SIDING WASTE TOTALS

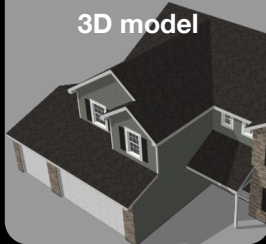
Siding & Trim Only*	Area	Squares
Zero Waste	773 ft ²	7%
+10%	851 ft ²	8%
+18%	911 ft ²	9%

* Openings < 20ft ²	Area	Squares
Zero Waste	886 ft ²	10%

2D floor plans



3D model



Damage photos



15

We work
with everyone
that you do.

150+

Integrations

1000+

Companies using Hover
with Integrations



CoreLogic



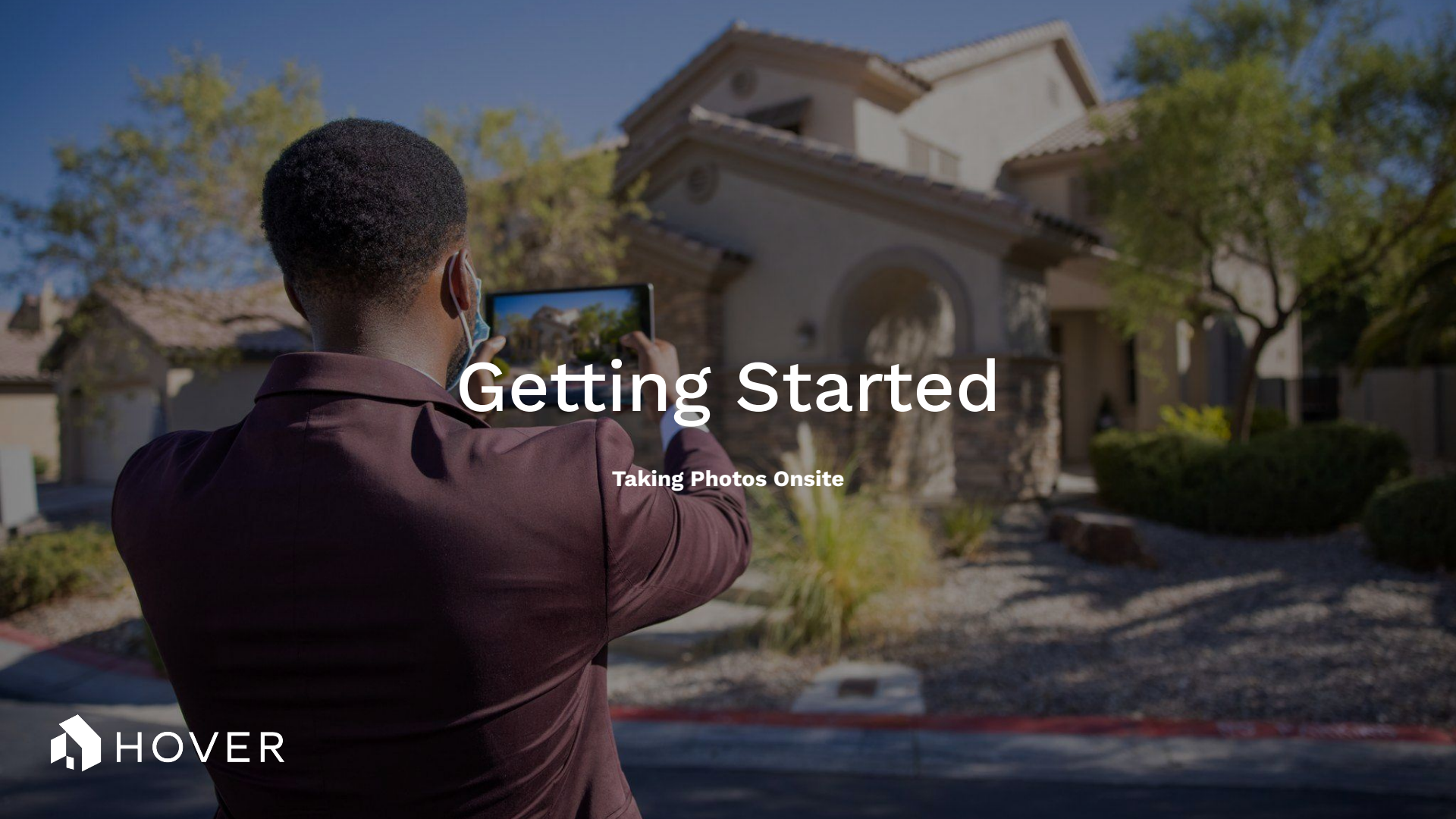
XACTIMATE®

EVOLUTION
GLOBAL



_zapier

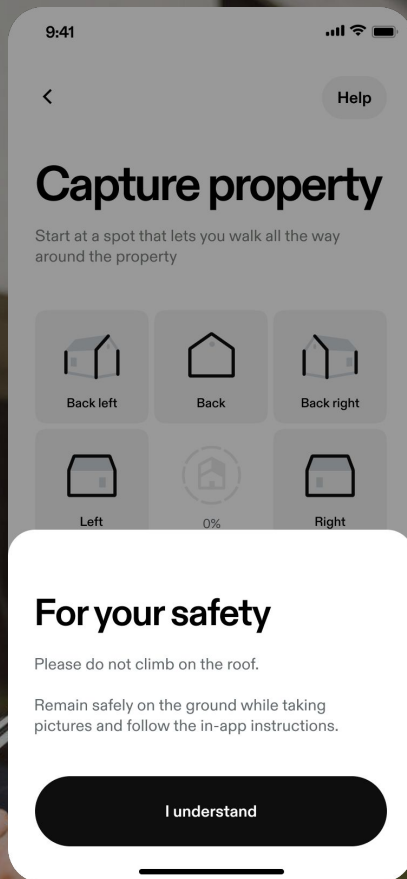
XactAnalysis®

A man with short dark hair, wearing a maroon long-sleeved shirt and a blue and white patterned face mask, is seen from behind. He is holding a tablet computer with both hands, taking a photo of a large, two-story house with a light-colored stucco exterior and a tiled roof. The house has arched windows and a central arched entrance. The scene is set outdoors on a sunny day with clear blue skies and some greenery in the background.

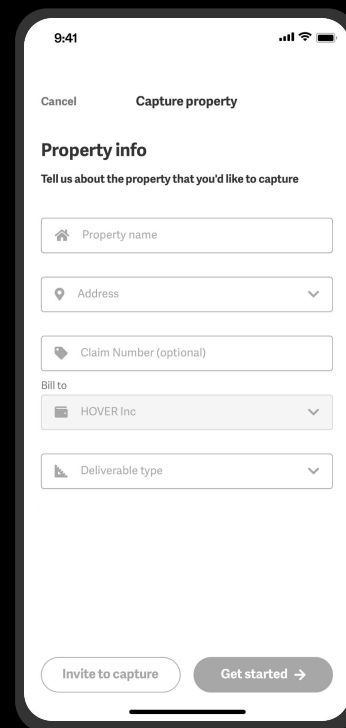
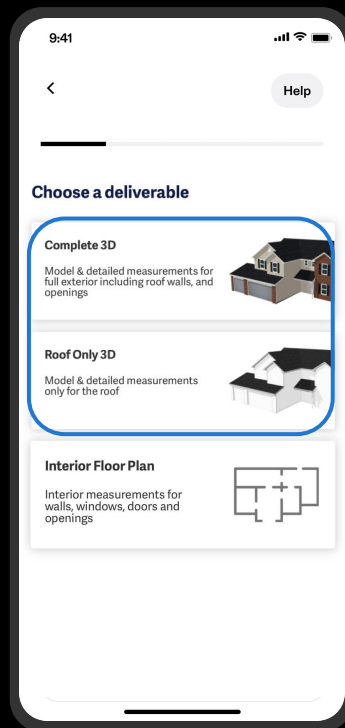
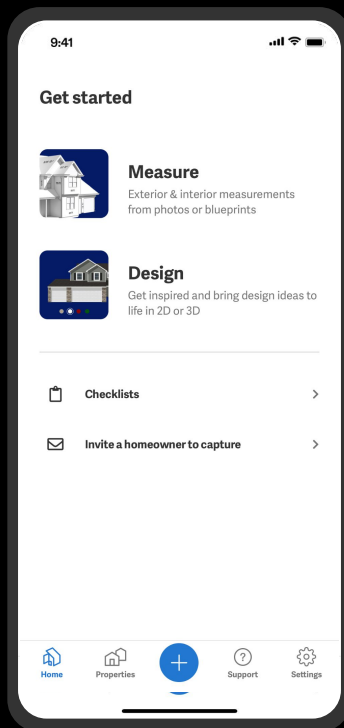
Getting Started

Taking Photos Onsite

Arrive onsite

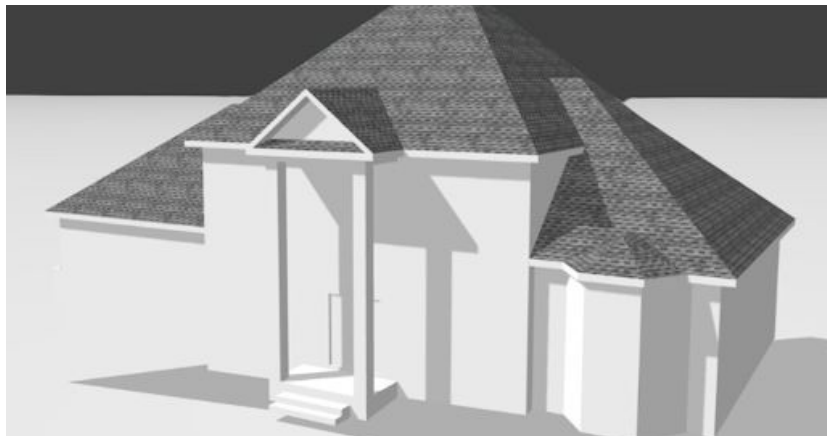


Start a new project





Measurement options



Roof Only

Roof Only option only includes the measurements, material, and model of the roof, including soffit.



Complete

Complete option includes measurements, materials, and model for the roof and elevations, openings, gutters, and downspout count.

Take photos of property

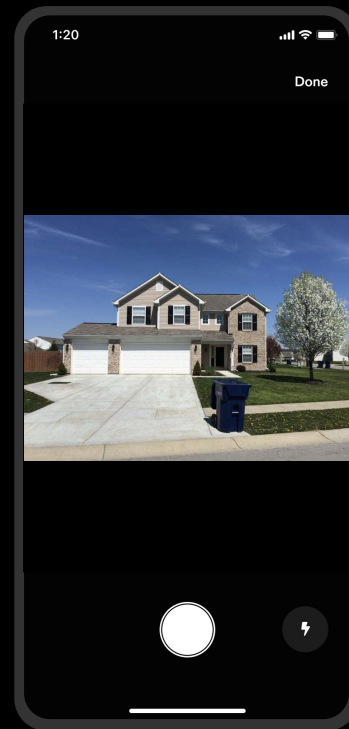
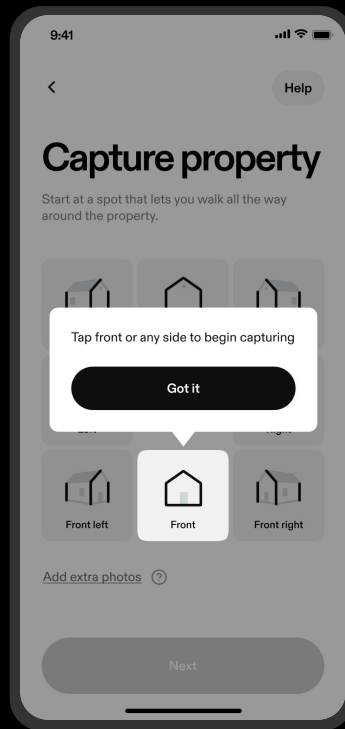
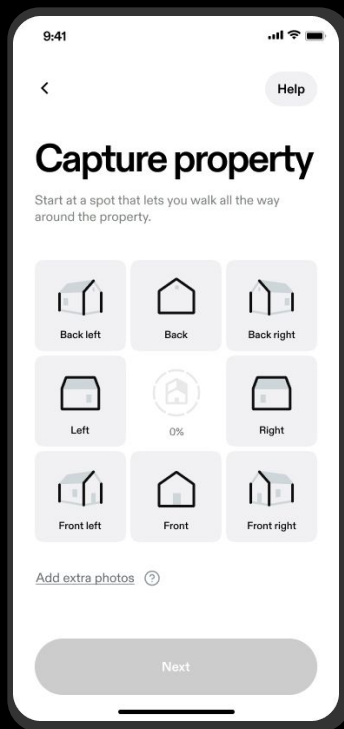




Photo best practices



Step Back

Include free space around the top, bottom and edges of the photo. Try to include the full structure in the photo. Step back to include both the sky and the ground.



Corner Photos

Corner shots are the most important photos to capture clearly so we can identify the geometry or lines of the structure. Good corner shots include three posts.

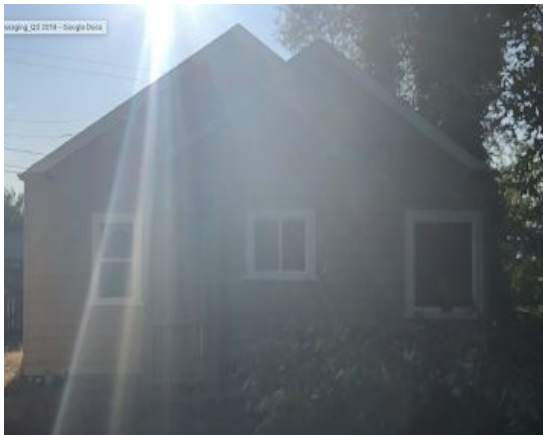


Minimize Obstructions

Move around to minimize obstructions, changing your position to get the best view of the property.



Photo best practices



Sun Glare

Avoid sun glare by using your hand or a notepad to cover your device..



Lighting

Use flash for photos at night and turn on interior or exterior lights at the property.



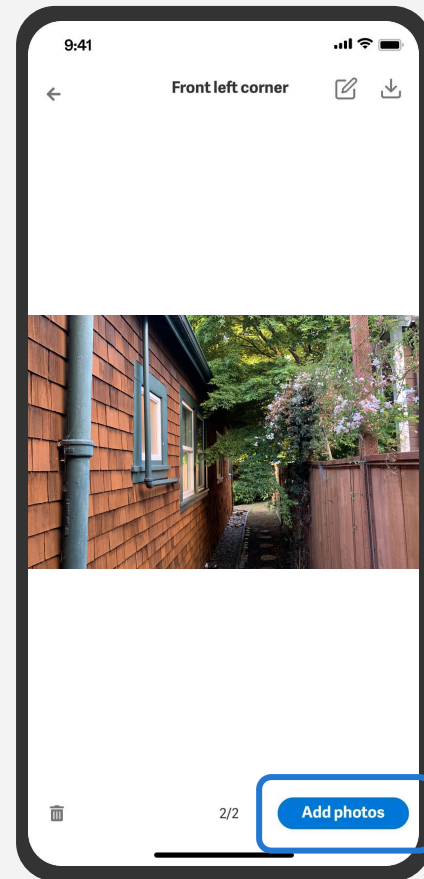
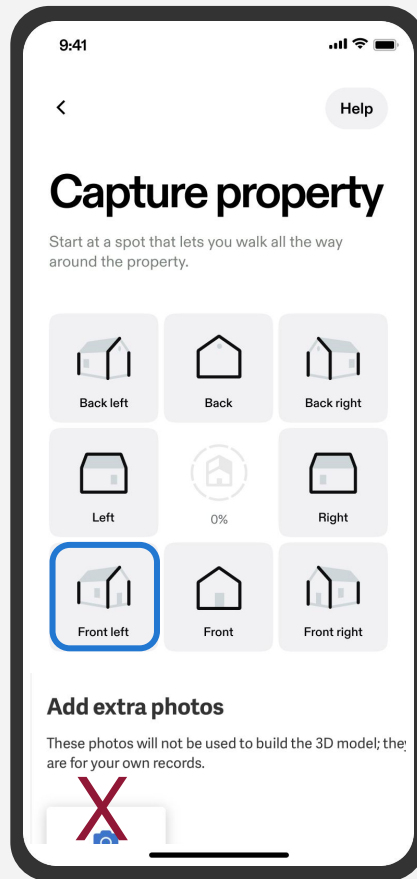
Landscape

Try holding your phone horizontally to include the free space around all edges.

Add more photos

Don't hesitate to add additional photos if you can't capture the entire side or corner. **Tap on the photo spot** in the grid and then tap “add photos”.

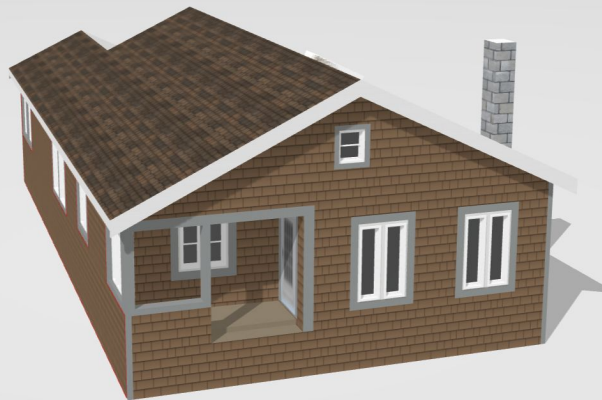
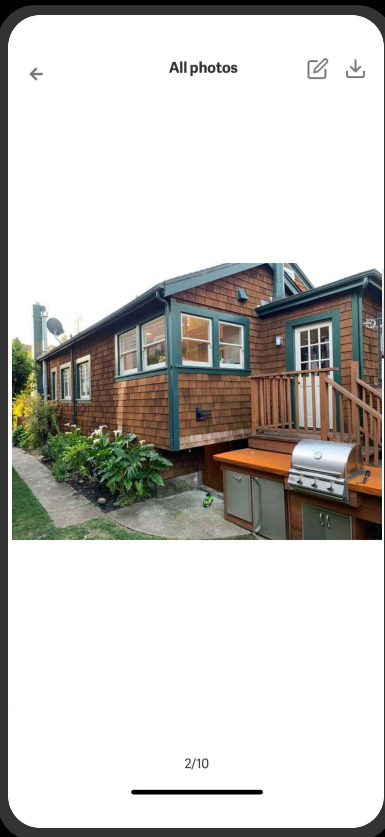
There is no limit to the number of photographs that you can take.



Tight Lot Lines

If you are having trouble taking all 8 photos, adjust your position until you see some free space in between the properties.

Take additional photos as needed, including as much of the structure as possible from different angles.



Try This

Add more
photos

Or This

Use portrait
mode

Town Homes

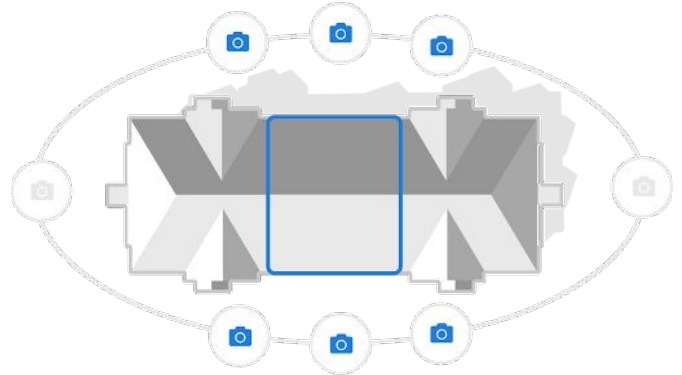
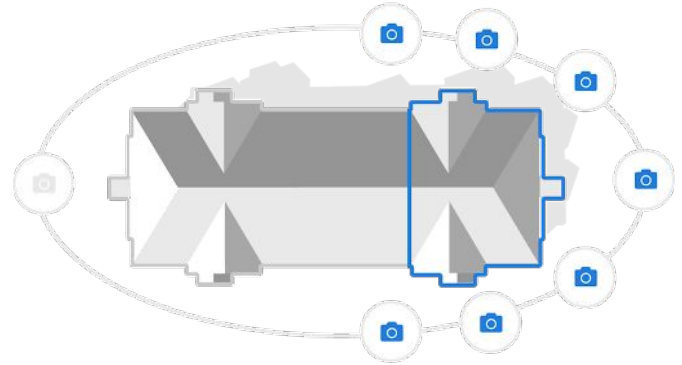
Multi-family units can still be captured by capturing as many of the 8 photos as possible.

For example, you may only capture three front and back photos for the middle unit of townhouse.

End Unit 7 Photos



Middle Unit 6 Photos



Reference Measurement

We use image data, such as a standard size front door to determine scale. When that visual data is obscured (ex: heavy foliage), we need to collect that information from another source.

It's a good habit to collect one reference measurement before leaving the property. Add it to the notes section for your reference, if needed.

The screenshot shows a mobile app interface titled "Capture summary". At the top, the status bar displays "5:00" and signal icons. Below the title is a back arrow. The form contains the following fields:

- Property name:** "This is a test"
- Address:** "55 Hope Street, Brooklyn, NY 11211, USA"
- Deliverable type:** "Complete 3D"
- Photos:** "Property (8 photos)" and "Extra Photos (0 photos)"
- Job notes:** A text input field with a trash icon and the placeholder text "Job notes for yourself or team". This field is highlighted with a blue border.
- Pro tip:** "While you are waiting for HOVER measurements, you can start inspecting the property!"
- Instruction:** "Clicking below starts your inspection and also uploads your..."
- Buttons:** "Finish and start Checklist" (blue) and "Finish" (blue text).

What to measure:

Some [examples of reference measurements](#) are the width of any wall from the left corner to the right corner, the height of the front door, or the garage door.

Reference Measurements

Examples of what to measure



Wall

Width from left corner to right corner.

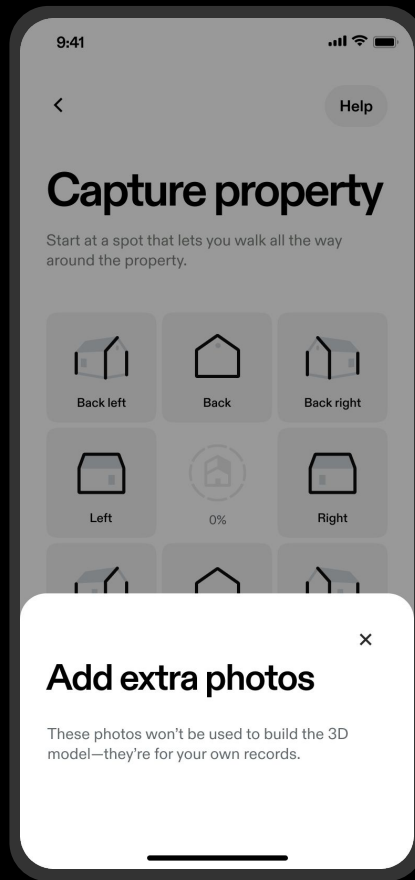


Door

Height of front or garage door, top to bottom.

Damage photos

After you have finished your 8 photo capture you may document additional damage to the structure and surrounding area in the “add extra photos” section.



Complete your capture

5:00

5G

←

Capture summary

Property name

This is a test

Address

55 Hope Street, Brooklyn, NY 11211, USA

Deliverable type

Complete 3D

Photos

Property (8 photos)

Extra Photos (0 photos)

Job notes for yourself or team

①

Pro tip: While you are waiting for HOVER measurements, you can start inspecting the property!

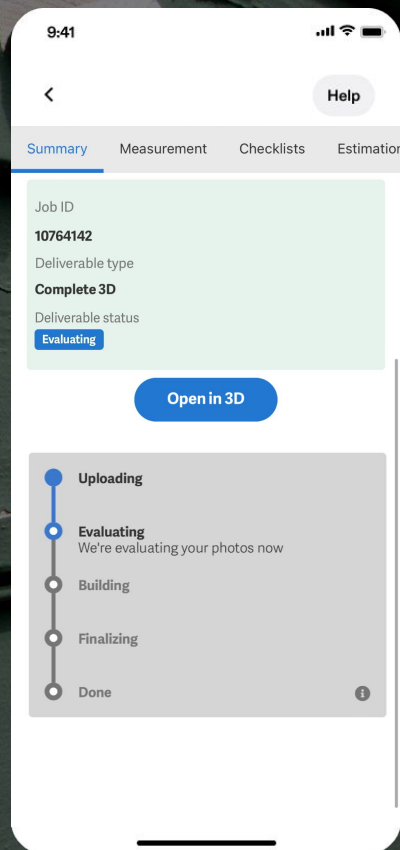
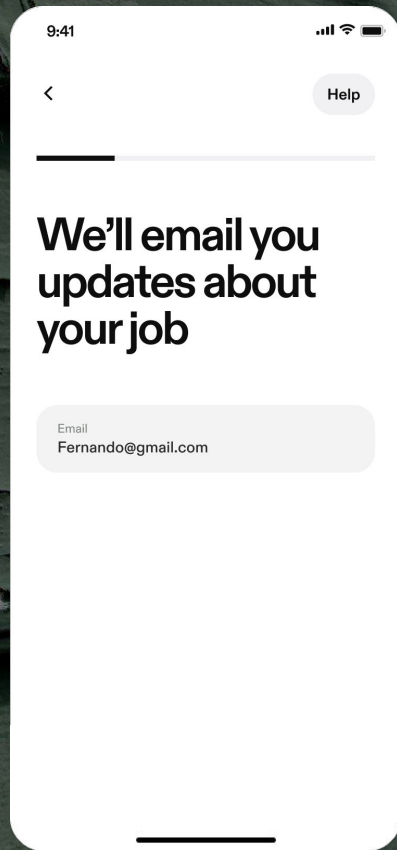
①

Clicking below starts your inspection and also uploads your

Finish and start Checklist

Finish

Project Notifications





Detached Structures

Each building on a property is measured and modeled as a separate order.

If a property has multiple structures, such as sheds, barns or detached garages, capture each structure separately.

It's best to use the same property name and add a suffix like 'Garage' or 'Shed' at the end.

5:00

← Capture summary

Property name
This is a test

Address
55 Hope Street, Brooklyn, NY 11211, USA

Deliverable type
Complete 3D

Photos
Property (8 photos)
Extra Photos (0 photos)

📎 Job notes for yourself or team

ⓘ Note: proceeding with any option

Finish

Add another structure

Finish and start checklist

Quickly import
measurements and
damage photos



Select service



Roof & Walls



Cancel

Submit

Quickly import measurements and damage photos



JOB TYPE

Complete



CONDUCTING CAPTURE

Insured (Sophie Moore)



REQUEST EMAIL

s.moore@gmail.com

REQUEST PHONE

519-589-9735

Cancel

Submit

Troubleshooting

Tips and Tricks





Tips and Tricks

Low Service Areas

Upload on Wifi Setting

Tap into your settings to toggle the option on to only upload when you're on wifi, that way this job will start to process next time you're connected to wifi"

Close Other Apps

Make sure that you have no other apps running in the background of your mobile device. This allows for connectivity bandwidth to be fully allocated to the Hover app.

Keep Hover Open

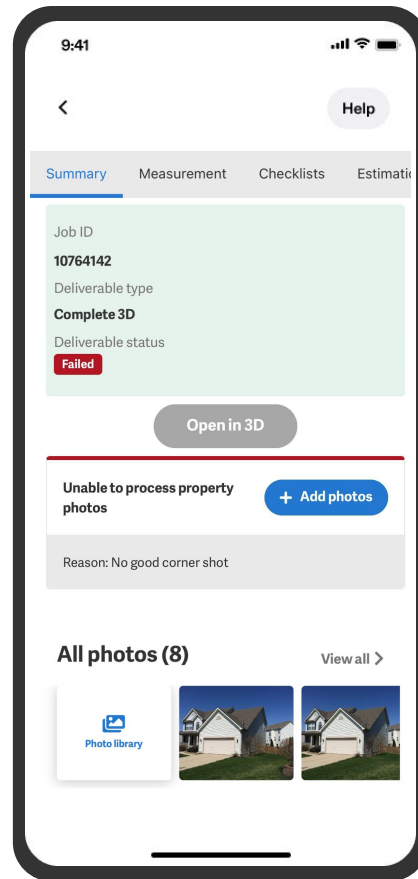
Stay on the Hover app until the job status says "Evaluating" so that your photos upload successfully. In fact, you should always do this - in good or poor service areas.



Re-upload photos

If we are unable to complete your job with the photos provided, you will receive a failed job notification 15 minutes after capture.

No need to start a new project! Simply open the Hover app, click on the project, and select the "Add photos" button.





How to Fix Failed Jobs

4 Most Common Issues

Reference Measurement Needed

Provide us with one hand [measurement for reference](#). Choose a part of the property that is clearly visible from within one of the photos that you submitted.

Not Enough Photos

Open the project and add additional photos to the property again, ensuring you have the 8 photos required to process the property.

Make sure they are not blurry!

Insufficient Corner Shots

Capture additional corner shot. Try to show two full elevations and three corner posts.

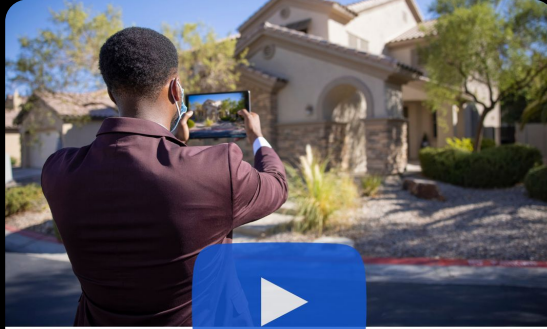
If possible, step back to get as much of the property as possible and try taking photos at different angles.

Property is Obstructed

Capture additional shots of your property, taking overlapping photos when there is an obstruction (trees or heavy foliage) so that we get as much information as possible.

Hover How-to:

Helpful Resources



What is a good corner shot?

Help
Center

Adding
Reference
Measurements

Watch Now

Taking Photos
with Hover

Watch Now

Top 4 Reasons that
Jobs Fails and
How to Fix Them



Need some help?

We're always just a phone call (or email, or chat) away.

HOVER Support Team

Here to help everyday, 8:00 A.M. - 8:00 P.M. EST



+1.844.754.6837



support@hover.to



In the app, tap 'Settings' then
'Support' to chat

94% satisfaction

WITH CUSTOMER SUPPORT

(Yes, these are real customer responses)